

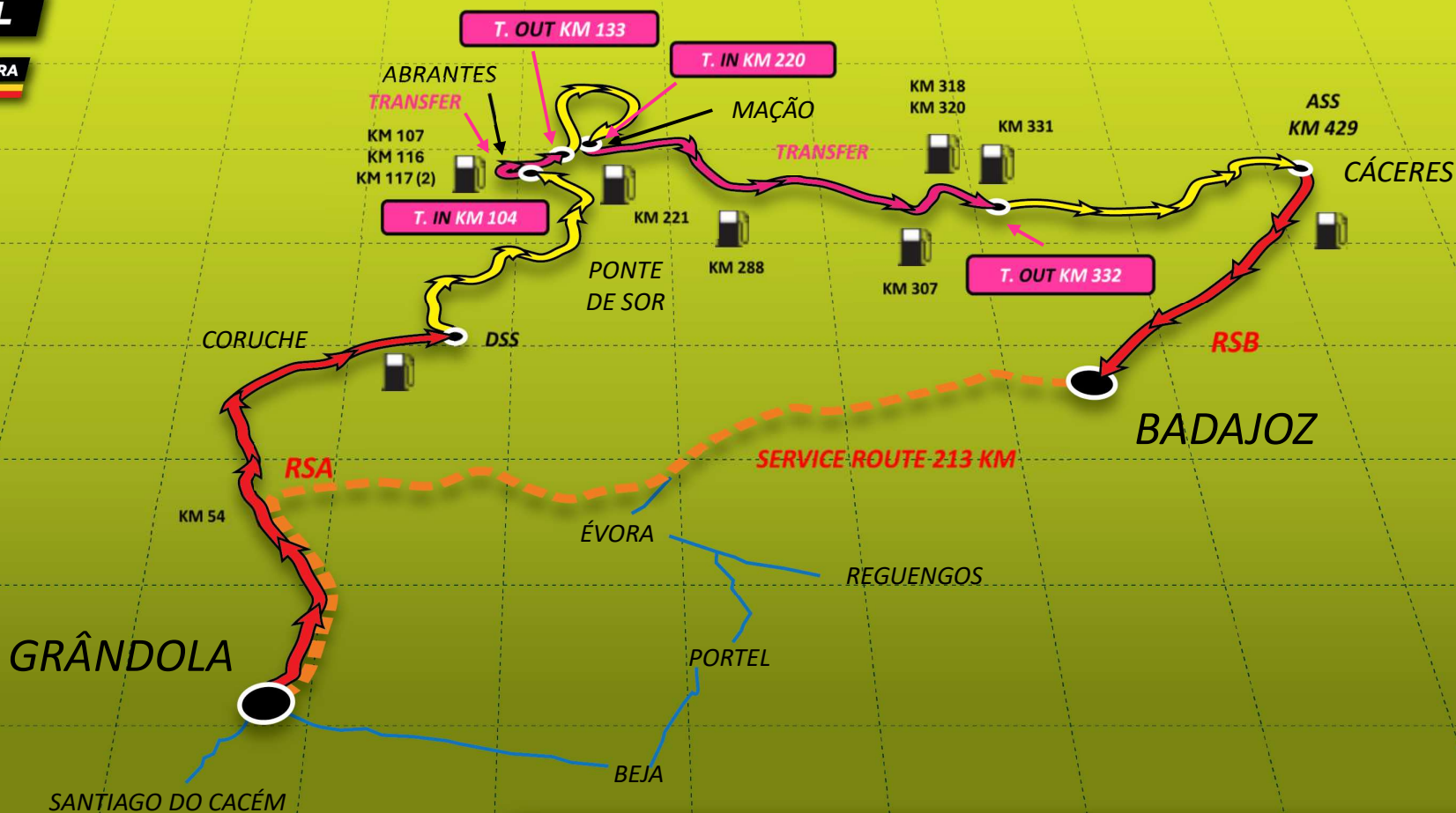
bp ultimate com tecnologia ACTIVE



RALLY RAID PORTUGAL

PORTUGAL • EXTREMADURA

STAGE 2 – SS3 – THURSDAY 25 SEPTEMBER 2025
GRÂNDOLA - BADAJOZ



RSA 132 KM
SS3 429 KM
RSB 94 KM



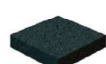
0%

Sable
Sand
Arena
الرمال



65%

Terre
Soil
Tierra
التراب



35%

TRASNFER
Goudron
Tarmac
Asfalto
الزفت

ORGANISATION



AUTOMÓVEL
CLUB DE PORTUGAL



visit Portugal



LISBOA

Extremadura



SPONSORS



RALLY RAID PORTUGAL

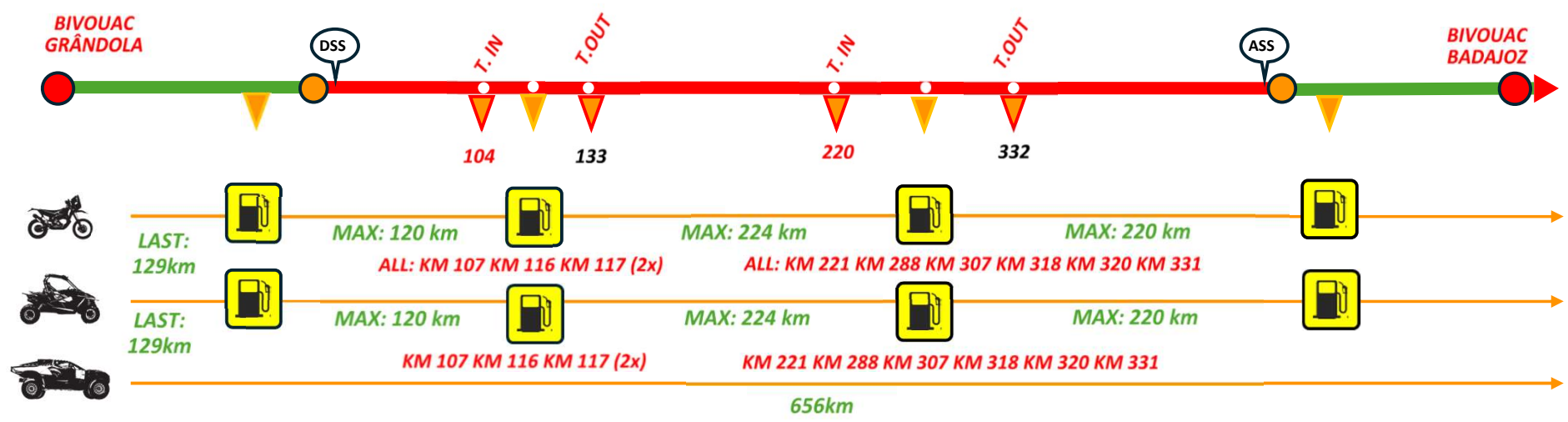
PORTUGAL • EXTREMADURA

STAGE 2 – SS3 - THURSDAY 25 SEPTEMBER 2025

RSa: 132km

SS3: 429km

RSb: 94km



PISO / CARRETERA ROAD / ROUTE

0%



AREIA
ARENA
SAND
SABLE

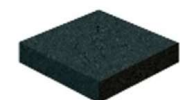
59%



TERRA
TIERRA
GRAVEL
TERRE

TRANSFER

41%



ASFALTO
ASFALTO
TARMAC
GOUDRON

GAS STATION IN RS AND LIAISON

RSa > km 0,54 – 70,70 – 95,51 – 129,66
RSb > km 12,60 – 52,04 – 87,50 – 91,41 – 94,46

NOTES

SERVICE CREW / RACE COMMON ROUTE

RSa: KM 1 to KM 54




RALLY RAID PORTUGAL

PORTUGAL • EXTREMADURA

TIMING STAGE 2 – SS3 – THURSDAY 25 SEPTEMBER 2025 GRÂNDOLA - BADAJOZ

TIMING STAGE 2 GRÂNDOLA - BADAJOZ THURSDAY SEPTEMBER 25TH

	Sunrise 07h25															Sunset 19h19	
	RSa Start	Km	Alloted Time	Road Section Finish	Secutiry - Entry Zone	SS3 Start	FIM - 60' Ultimate - 50' CHG / SSV - 1h10'		FIM - 2h00' CHG / SSV - 2h10' ULT/STK - 1h50'		Km	Estimated Time	Max Time	SS3 Finish RSb Start	Km	Alloted Time	Bivouac Estimated
							T.In 104	T.Out 133	T.In 220	T.Out 332							
Control Opening	04:25	131,99	02:00	06:25	00:05	06:30	-	-	-	-	429,85	-	-	13:10	94,85	02:00	15:10
1st COMPETITOR FIM	05:25			07:25		07:30	08:50	09:50	10:55	12:55		06:40	09:15	14:10			16:10
Last Bike / Quad	06:45			08:45		08:50	11:00	12:00	13:45	15:45		09:15	09:15	18:05			20:05
1st COMPETITOR FIA	07:30			09:30		09:35	10:55	11:45	12:50	14:40		06:20	09:15	15:55			17:55
Last Car	09:00			11:00		11:05	13:15	14:05	15:50	17:40		09:15	09:15	20:20			22:20
Control Closing	10:00			12:00		12:05	-	-	-	-		-	-	21:20			23:20

Starting Order FIM - Order of classification 10x3' - 10x2'

Break between FIM and FIA

Starting Order FIA - Order of classification 10x3' - 10x2'

All other competitors every minute

00:45

All other competitors every minute

FIM MAX TIME

09:15

FIA MAX TIME

09:15

Note: The schedule it's in Portuguese GMT

**BRIEFING STAGE 3
17H00 (SPORTITY)**

ORGANISATION

SPONSORS

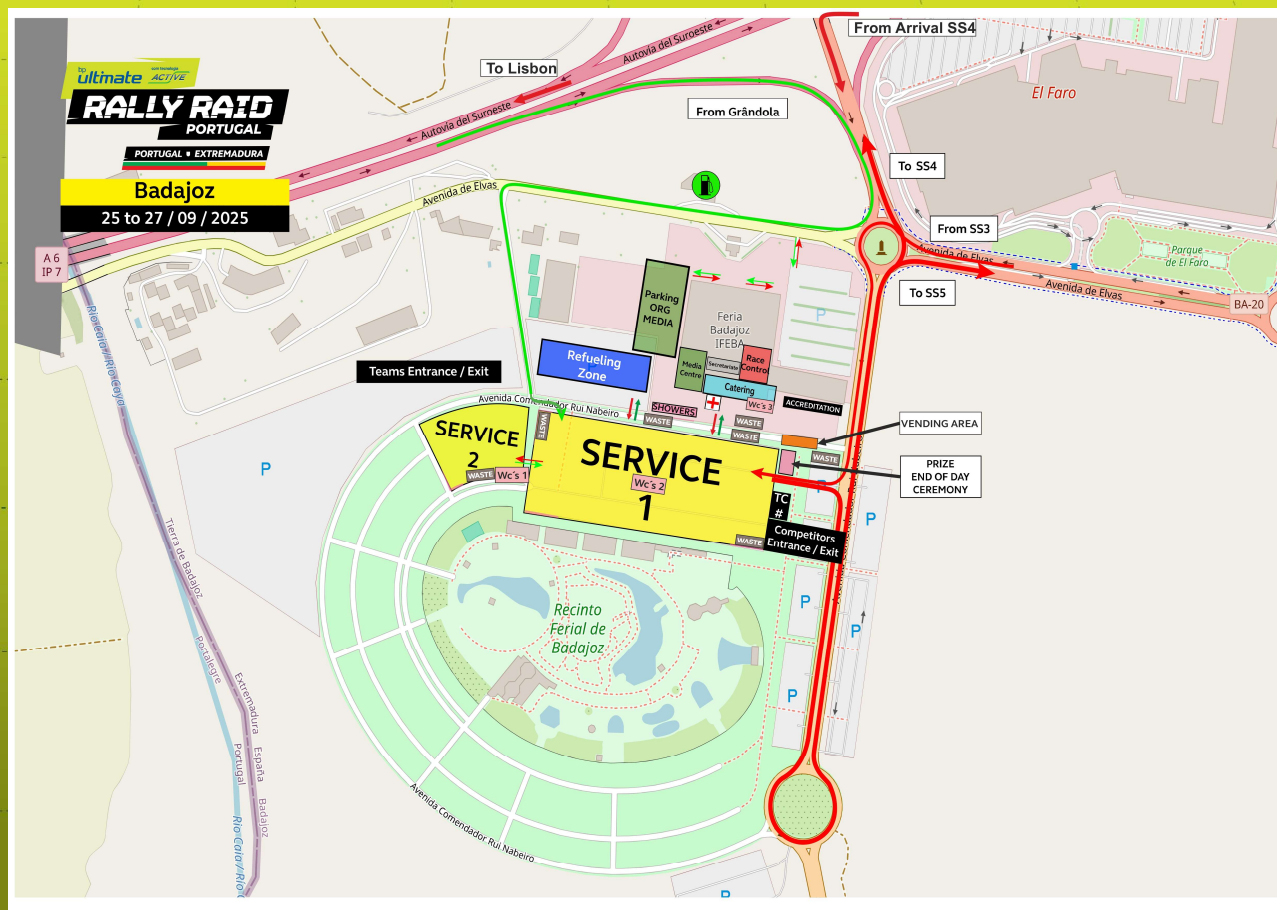
bp ultimate com tecnologia ACTIVE



RALLY RAID PORTUGAL

PORTUGAL • EXTREMADURA

BIVOUAC - BADAJOZ



ORGANISATION



SPONSORS



bp
ultimate com tecnologia
ACTIVE



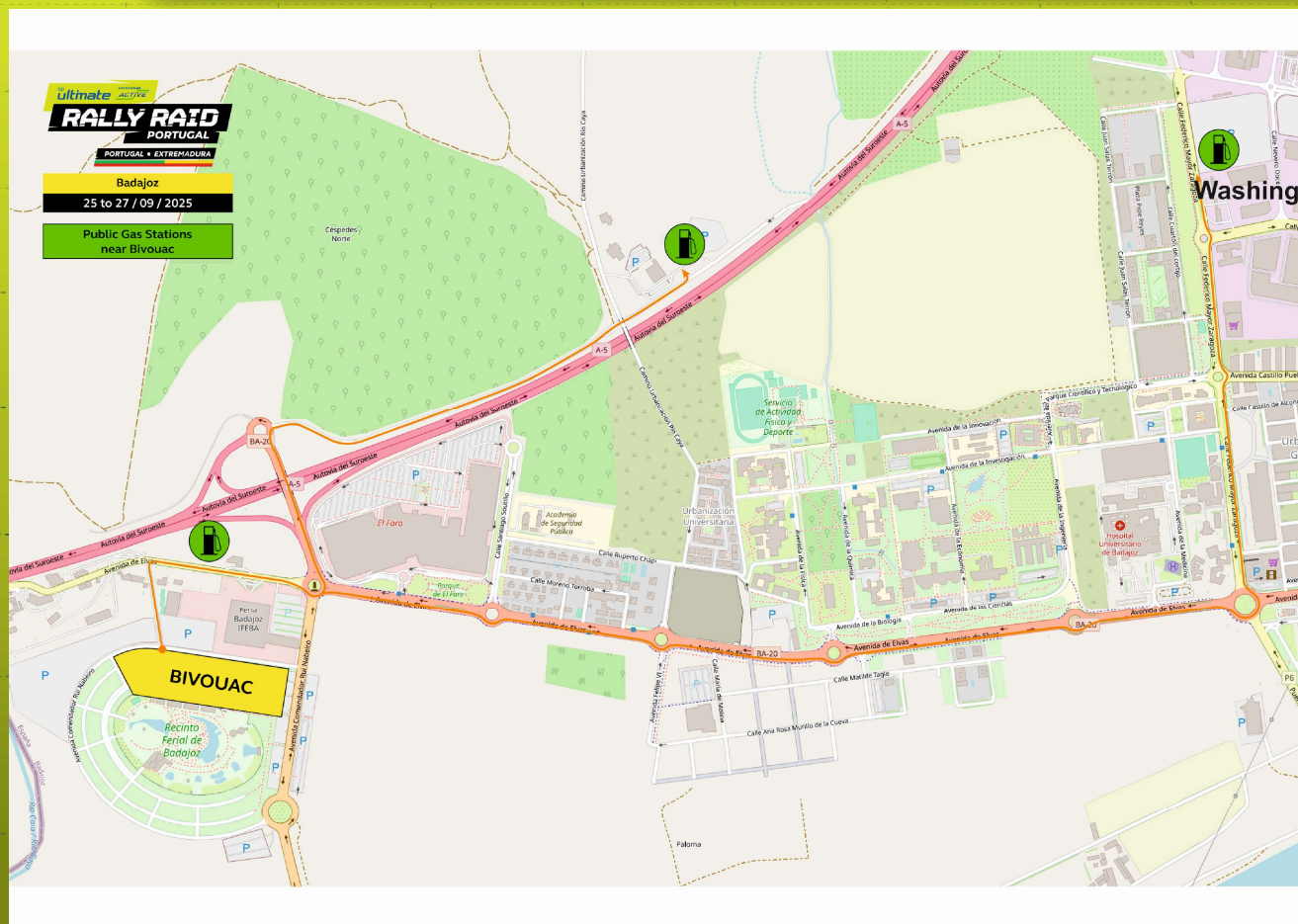
RALLY RAID PORTUGAL

PORTUGAL • EXTREMADURA

STAGE 2 – SS3 – THURSDAY 25 SEPTEMBER 2025

GRÂNDOLA – BADAJOZ

Public GAS Station near to Bivouac



ORGANISATION

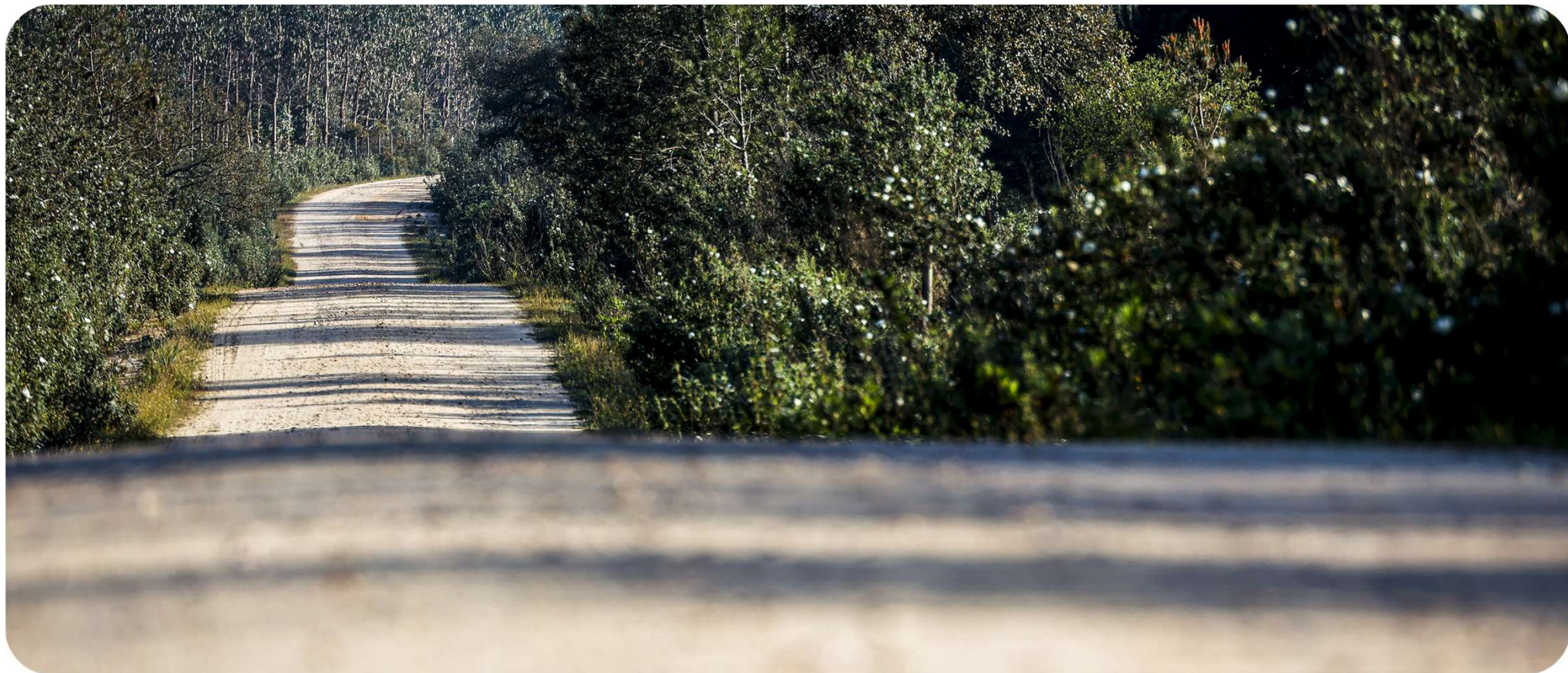


SPONSORS





DAILY BRIEFING – STAGE 2



ORGANISATION



SPONSORS





DAILY BRIEFING

TRANSFER KM28-KM29 – ALL T: 2m

TRANSFER KM40-KM46 – ALL T: 6m

TRANSFER KM104-KM133 – FIM/R3 T:1h00m(Refuel) /CHG/SSV T: 1h10m (Refuel)/ULT T: 50m

TRANSFER KM220-KM332 – FIM/R3 T:2h00m(Refuel) /CHG/SSV T: 2h10m (Refuel)/ULT T: 1h50m

TRANSFER KM348-KM374 – ALL T: 25m

TRANSFER KM406-KM412 – ALL T: 9m

TRANSFER ZONES

ORGANISATION



AUTOMÓVEL
CLUB DE PORTUGAL



SPONSORS





DAILY BRIEFING

DO NOT CUT THROUGH CROPS

SS3: The selective section generally takes place on tree-lined tracks, which are always very technical in places. Take care on narrow sections and when passing between fences. There are numerous gate passages on the final kilometres.

There are still many gates to pass through, which are not always clearly visible and are sometimes very narrow, so take care in dusty conditions.

There are numerous passages over narrow concrete bridges with edges that are not always visible, often covered by vegetation, with small concrete channels on the edges to allow water to pass through. Do not cut corners; stay on the track, especially on the second part of the special stage.

OPENING FEEDBACK

ORGANISATION



AUTOMÓVEL
CLUB DE PORTUGAL



SPONSORS



DAILY BRIEFING

Long stage with three distinct sections, the first with sandy but hard tracks, the second part is a mountain route, with some stones but generally good surface. Both situated within a forest zone.

The final part, already in Spain, has hard but good rural roads, using farm tracks.

INFORMATION

ORGANISATION



AUTOMÓVEL
CLUB DE PORTUGAL



SPONSORS





DAILY BRIEFING

LAST-MINUTE CHANGE TO THE ROUTE:

*FROM KM 374.51 TO KM 406.38, THE ROAD BOOK
WAS NOT CHECKED BY THE PROMOTER OFFICIAL
TEAM (OPENING CAR), BUT BY A TEAM FROM THE
ORGANISATION.*

ATTENTION

ORGANISATION



AUTOMÓVEL
CLUB DE PORTUGAL



visit Portugal



LISBOA
Câmara Municipal



SPONSORS



DAILY BRIEFING

From the km 6,79 to the km 84,85, the Stage 2 RSA will be done in a Motorway to the stage start. We must remember all competitors to use the VIA Verde device on your vehicle since the moment you leave the Bivouac and accordingly to the instructions published on Sportity.

ATTENTION



AUTOMÓVEL
CLUB DE PORTUGAL





DAILY BRIEFING

Riders wearing warm clothing in the Stage 2 Rsa, may hand it to the SS start controllers and must identify it for collection at the secretariat.

ATTENTION



ORGANISATION
AUTOMÓVEL
CLUB DE PORTUGAL

